

• Question No. 1

Select the option that is related to the fifth letter-cluster in the same way as the second letter-cluster is related to the first letter-cluster and the fourth letter-cluster is related to the third letter-cluster.

CIVILIAN : AGREFCSF :: DOCTRINE : BMYPLCFW :: EQUATION : ?

**Options :**

1. NUGFSDAX
2. BURDSTER
3. VUGHLOPA
4. COQWNCGF
- 5.

Answer : COQWNCGF

• Question No. 2

Select the correct combination of mathematical signs to sequentially replace the \* signs and balance the given equation.

$$76 * 34 * 23 * 12 * 6 * 21$$

**Options :**

1. +, -, +, +, =
2. -, -, +, +, =
3. ×, -, +, +, =
4. -, -, +, ÷, =
- 5.

Answer : -, -, +, ÷, =

• Question No. 3

Select the option that is related to the fifth term in the same way as the second term is related to the first term and the fourth term is related to the third term.

132 : 10 :: 42 : 5 :: 272 : ?

**Options :**

1. 15
2. 16
3. 13
4. 14
- 5.

Answer : 15

• Question No. 4

Which of the following numbers will replace the question mark (?) in the given series?

19, 26, ?, 46, 59, 74

**Options :**

1. 33
2. 30
3. 35
4. 32
- 5.

Answer : 35

• Question No. 5

Select the option that represents the letters that, when placed from left to right in the blanks below, will complete the letter series.

A B C \_ A \_ C C A B \_ C \_ B \_ C

Options :

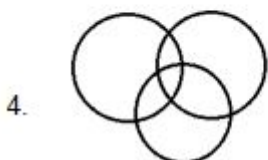
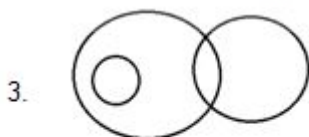
1. ABBCC
2. CABBA
3. CBCAC
4. ACCBA
- 5.

Answer : CBCAC

• Question No. 6

Select the Venn diagram that best represents the relationship between the following classes.

Actors, Comedians, Politicians



Options :

- 1.1
- 2.2
- 3.3

4. 4

5.

Answer : 4

• Question No. 7

In a certain code language, 'CURD' is written as '342184' and 'BREAD' is written as '2181024'. How will 'BUTTER' be written in that language?

**Options :**

1. 421201018

2. 442201018

3. 24220201018

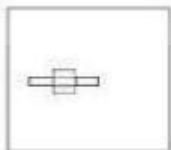
4. 2212020518

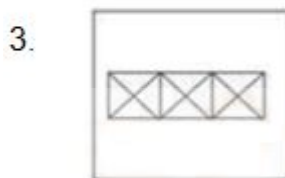
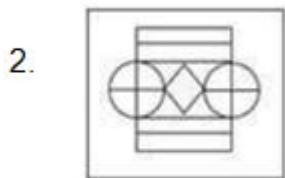
5.

Answer : 24220201018

• Question No. 8

Select the option figure in which given figure is embedded. (Rotation is NOT allowed)





Options :

1.1

2.2

3.3

4.4

5.

Answer : 4

• Question No. 9

Select the set in which the numbers are related in the same way as are the numbers of the following set.

(NOTE: Operations should be performed on the whole numbers, without breaking down the numbers into their constituent digits. E.g. 13 – Operations on 13 such as adding/subtracting /multiplying etc. to 13 can be performed. Breaking down 13 into 1 and 3 and then performing mathematical operations on 1 and 3 is not allowed)

(26, 14, 170)

(31, 7, 18)

**Options :**

1. (11, 5, 17)
2. (34, 10, 72)
3. (21, 9, 60)
4. (14, 6, 24)
- 5.

Answer : (21, 9, 60)

• Question No. 10

Three of the following four triads are alike in a certain way as they are formed by performing same mathematical operations among themselves and thus form a group. Which triad does NOT belong to that group?

**Options :**

1. 12 : 47 : 60
2. 4 : 16 : 20
3. 2 : 7 : 10
4. 5 : 19 : 25
- 5.

Answer : 4 : 16 : 20

• Question No. 11

Which two signs should be interchanged to make the given equation correct?

$$912 - 456 \times 28 + 390 \div 2 = 444$$

**Options :**

1.  $\div$  and  $-$

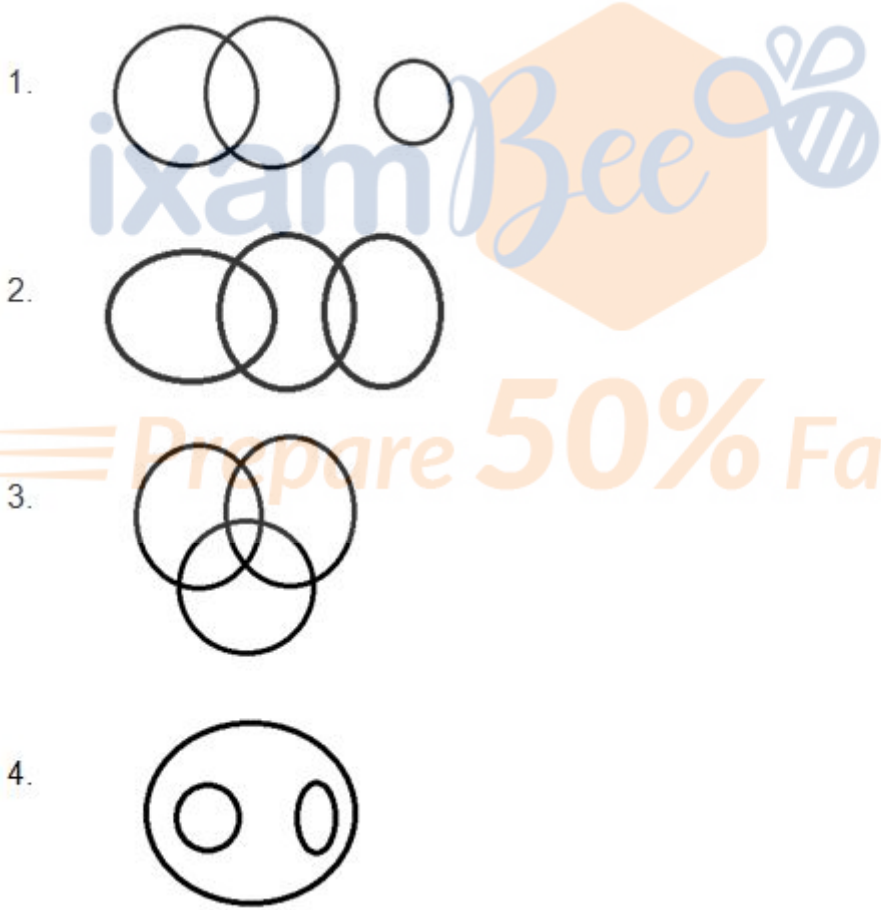
- 2.  $\div$  and +
- 3. - and +
- 4. + and  $\times$
- 5.

Answer :  $\div$  and -

• Question No. 12

Select the Venn diagram that best illustrates the relationship between the following classes.

Ministers, Farmers and Engineers



Options :

- 1. 1
- 2. 2

3. 3

4. 4

5.

Answer : 3

• Question No. 13

Select the option that represents the correct order of the given words as they would appear in an English dictionary.

1. Refinery

2. Reflect

3. Reference

4. Refugee

5. Refillable

6. Reformist

Options :

1. 3, 5, 1, 2, 6, 4

2. 5, 1, 3, 2, 4, 6

3. 5, 1, 3, 2, 6, 4

4. 3, 1, 5, 2, 6, 4

5.

Answer : 3, 5, 1, 2, 6, 4

• Question No. 14

Study the given pattern carefully and select the number that can replace the question mark(?) in it.

(6, 4, 6)



(18, 9, 13)

(8, 6, ?)

(NOTE: Operations should be performed on the whole numbers, without breaking down the numbers into its constituent digits. E.g. 13-Operations on 13 such as adding/subtracting/multiplying etc. to 13 can be performed. Breaking down 13 into 1 and 3 and then performing mathematical operations on 1 and 3 is not allowed)

Options :

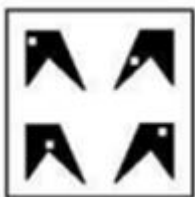
1. 8
2. 14
3. 4
4. 6
- 5.

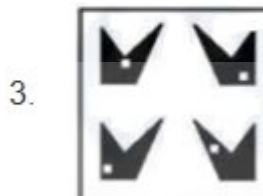
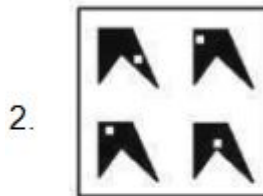
Answer : 6

- Question No. 15

Which of the answer figures is the exact mirror image of the given problem figure when the mirror is held at the right side?

Problem figure:





Options :

1. 1

2. 2

3. 3

4. 4

5.

Answer : 1

• Question No. 16

Select the option that is related to the fifth number in the same way as the second number is related to the first number and the fourth number is related to the third number-

1 : 7 :: 3 : 215 :: 4 : ?

**Options :**

1. 453
2. 342
3. 511
4. 363
- 5.

Answer : 511

• Question No. 17

'A + B' means 'A is brother of B'

'A - B' means 'A is mother of B'

'A × B' means 'A is husband of B'

'A ÷ B' means 'A is sister of B'

If  $C \div B - E + A \times F - D$ , then which of the following statements is NOT correct?

**Options :**

1. D is the daughter of B.
2. C is the sister of the mother of A.
3. F is the wife of the son of B.
4. B is the mother of A.
- 5.

Answer : D is the daughter of B.

• Question No. 18

In a certain code language, "DICTATOR" is written as "DROATTCI" and "GLIMPSE" is written as "GESPMIL". How will "CONDEMN" be written in that language?

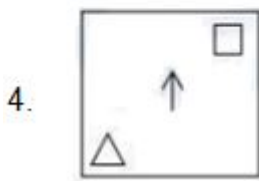
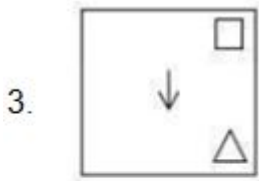
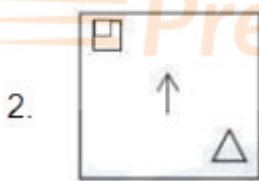
**Options :**

1. CNONMED
2. NMEDNOC
3. NCONDEM
4. CNMEDNO
- 5.

Answer : CNMEDNO

• Question No. 19

Which of the given figures when placed in the 5th position would continue the series that is established by the first four figures?



Options :

1.1

2.2

3.3

4.4

5.

Answer : 3

• Question No. 20

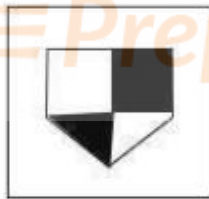
Select the figure that will replace the question mark (?) in the following figure series.



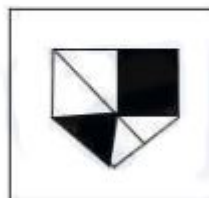
1.



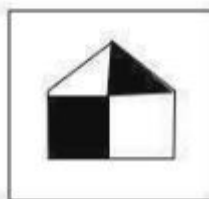
2.



3.



4.



**Options :**

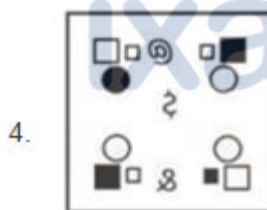
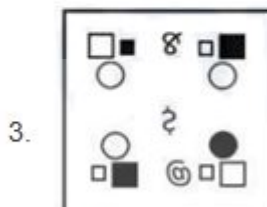
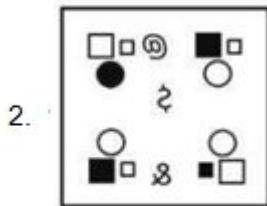
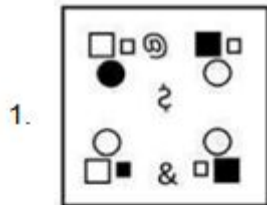
- 1. 1
- 2. 2
- 3. 3
- 4. 4
- 5.

Answer : 4

• Question No. 21

Select the connect mirror image from the following options, when the mirror is placed on the right side of the given figure.





Options :

- 1. 1
- 2. 2
- 3. 3
- 4. 4
- 5. 5

Answer : 2

• Question No. 22

Select the option that is related to the third word in the same way as the second word is related to the first word. (The words must be considered as meaningful English words and must not be related to each other based on the number of letters/number of consonants/vowels in the word)

Diet : Dietician :: High blood sugar : ?

**Options :**

1. Oncologist
2. Urologist
3. Dermatologist
4. Diabetologist
- 5.

Answer : Diabetologist

• Question No. 23

Which of the following letter-clusters can replace the question mark (?) in the given series to make it logically complete?

DNU, ?, NXE, SCJ, XHO

**Options :**

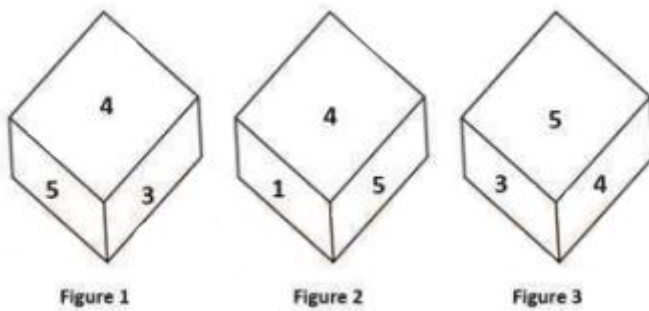
1. GQW
2. GPV
3. HRY
4. ISZ
- 5.

Answer : ISZ

• Question No. 24

Three different positions of the same dice are shown. Find the number on the face opposite the face showing '1'.





**Options :**

1. 2
2. 3
3. 6
4. 4
- 5.

Answer : 3

- Question No. 25

Three of the following four letter-clusters are alike in a certain way and one is different. Pick the odd one out.

AFKP

GKPS

SXCH

JOTY

**Options :**

1. JOTY
2. SXCH
3. GKPS
4. AFKP
- 5.

Answer : GKPS

- Question No. 26

The Pradhan Mantri Rojgar Yojana was started during the \_\_\_\_\_.

**Options :**

1. Ninth Five Year Plan
2. Eighth Five Year Plan
3. Seventh Five Year Plan
4. Tenth Five Year Plan
- 5.

Answer : Eighth Five Year Plan

- Question No. 27

Banganga festival takes place annually at which of the following places in Maharashtra?

**Options :**

1. Pune
2. Nashik
3. Mumbai
4. Nagpur
- 5.

Answer : Mumbai

- Question No. 28

Who was the first social reformer to view modern education as a vehicle for the spread of modern ideas in the country?

**Options :**

1. Raja Ram Mohan Roy
2. DK Karve

3. Savitribai Phule
4. Swami Vivekananda
- 5.

Answer : Raja Ram Mohan Roy

• Question No. 29

The Mana Ooru Mana Badi programme was formally launched by the \_\_\_\_\_ government in March 2022 to introduce English medium in government schools.

**Options :**

1. Odisha
2. West Bengal
3. Andhra Pradesh
4. Telangana
- 5.

Answer : Telangana

• Question No. 30

Which of the following is used to chemically test starch?

**Options :**

1. Chlorine solution
2. Iodine solution
3. Sulphur solution
4. Bromine solution
- 5.

Answer : Iodine solution

• Question No. 31

Which of the following is the correct match of column-A with column-B?

Column-A (Nutrients)	Column-B (Source)
i. Protein rich food	a. Wheat
ii. Fat rich food	b. Lemon
iii. Carbohydrate rich food	c. Egg white
iv. Vitamin C rich food	d. Butter and cheese

Options :

1. i-c, ii-a, iii-b, iv-d
2. i-c, ii-d, iii-b, iv-a
3. i-c, ii-d, iii-a, iv-b
4. i-d, ii-c, iii-b, iv-a
- 5.

Answer : i-c, ii-d, iii-a, iv-b

- Question No. 32

Who was the first Odissi dancer from Odisha to receive Padma Vibhushan?

Options :

1. Sonal Mansingh
2. Sanjukta Panigrahi
3. Kelucharan Mohapatra
4. Madhvi Mudgal
- 5.

Answer : Kelucharan Mohapatra

- Question No. 33

In which state is the Maski inscription located at present?

**Options :**

1. Tamil Nadu
2. Andhra Pradesh
3. Madhya Pradesh
4. Kamataka
- 5.

Answer : Kamataka

• Question No. 34

When did the Drafting Committee publish the first draft of the Indian Constitution?

**Options :**

1. June 1948
2. May 1948
3. January 1948
4. February 1948
- 5.

Answer : February 1948

• Question No. 35

Identify the subsidiary of SAIL that is located along the Kolkata-Asansol railway line?

**Options :**

1. ESL Steel Limited (ESL)
2. Jindal Steel and Power Ltd (JSPL)
3. Indian Iron and Steel Com  $\square$ h  $\square$  (IISCO)
4. Tata Iron and Steel plant (TISCO)
- 5.

Answer : Indian Iron and Steel Com  $\square$ h  $\square$  (IISCO)

- Question No. 36

Name the French jeweller who travelled to India at least six times during the Mughal period.

**Options :**

1. Antonio Monserrate
2. Jean-Baptiste Tavernier
3. Seydi Ali Reis
4. Peter Mundy
- 5.

Answer : Jean-Baptiste Tavernier

- Question No. 37

Which of the following states in India, during October to December, receive rainfall due to the Northeast monsoon?

**Options :**

1. Tamil Nadu, Kerala and Andhra Pradesh
2. Punjab, Haryana and Madhya Pradesh
3. Andhra Pradesh, Madhya Pradesh and Karnataka
4. Uttar Pradesh, Bihar and West Bengal
- 5.

Answer : Tamil Nadu, Kerala and Andhra Pradesh

- Question No. 38

Machines, tools and implements, and buildings are examples of which type of goods?

**Options :**

1. Consumer goods
2. Inferior goods
3. Intermediate goods

4. Capital goods

5.

Answer : Capital goods

- Question No. 39

Which of the following has the highest value of resistivity?

**Options :**

1. Silver

2. Nichrome

3. Chromium

4. Iron

5.

Answer : Nichrome

- Question No. 40

Asad Ali Khan is best known for his mastery over which of the given musical instruments?

**Options :**

1. Surbahar

2. Violin

3. Tabla

4. Rudra Veena

5.

Answer : Rudra Veena

- Question No. 41

The part of the Himalayas lying between Satluj and \_\_\_\_\_ rivers is known as Kumaon Himalayas.

**Options :**

1. Indus
2. Kali
3. Brahmaputra
4. Teesta
- 5.

Answer : Kali

• Question No. 42

In December 2021, Aanchal Thakur was in news for winning a bronze medal at an international event. Which sport is she associated with?

**Options :**

1. Alpine Skiing
2. Biathlon
3. Billiards
4. Figure Skating
- 5.

Answer : Alpine Skiing

• Question No. 43

Which of the following organisations is credited with writing literary pieces for the abolition of Sati Pratha?

**Options :**

1. The Harijan Sevak Sangh
2. The Brahmo Samaj
3. The Satya Shodhak Samaj
4. The Bahujan Samaj
- 5.



Answer : The Brahmo Samaj

- Question No. 44

The pensions payable to or in respect of the officers and servants of the Supreme Court are charged upon \_\_\_\_\_.

**Options :**

1. Consolidated Fund of India
2. Reserve Bank of India
3. Public Account of India
4. Finance Commission of India
- 5.

Answer : Consolidated Fund of India

- Question No. 45

On 20 July 2021, the Supreme Court struck down certain provisions of part IX B of the Constitution of India, Part IX B was related to:

**Options :**

1. Panchayats
2. Municipalities
3. Co-operative Societies
4. Subordinate Courts
- 5.

Answer : Co-operative Societies

- Question No. 46

Which of the following Indian states was the host of the 36th national games?

**Options :**

1. Punjab
2. Maharashtra
3. Gujarat
4. Haryana
- 5.

Answer : Gujarat

• Question No. 47

Which element of Group 17 has two isotopes of masses 35 and 37 amu with average abundance of 75.77% and 24.23%, respectively?

Options :

1. Chlorine
2. Iodine
3. Fluorine
4. Astatine
- 5.

Answer : Chlorine

• Question No. 48

'Dalkhai' is a folk dance of which of the following states of India?

Options :

1. Punjab
2. Kerala
3. Odisha
4. Karnataka
- 5.

Answer : Odisha

- Question No. 49

Which of the following countries never hosted the Paralympic games?

**Options :**

1. Israel
2. Japan
3. South Korea
4. India
- 5.

Answer : India

- Question No. 50

The 'Right to Work' plan, under the National Rural Employment Guarantee Act, 2005, was implemented in how many districts in the first phase?

**Options :**

1. 150
2. 200
3. 100
4. 120
- 5.

Answer : 200

- Question No. 51

Simplify

$$2.5 \times [144 \div 198 \times \{121 \times 81 \div (11 \times 9)\}]$$

**Options :**

1. 180
2. 175
3. 185
4. 190
- 5.

Answer : 180

• Question No. 52

There are 3 members in a family. The average age of the father and mother is 40 years. The average age of the father, mother, and daughter is 30 years. Find the age (in years) of the daughter.

Options :

1. 6
2. 12
3. 10
4. 8
- 5.

Answer : 10

• Question No. 53

A shopkeeper sells an item at a profit of 15% and uses a weight that is 20% less. Find his actual profit percentage.

Options :

1. 42.5%
2. 50%
3. 40%
4. 43.75%
- 5.

Answer : 43.75%

- Question No. 54

Find the smallest number that can be subtracted from 148109326 so that it becomes divisible by 8.

**Options :**

1. 4
2. 8
3. 6
4. 10
- 5.

Answer : 6

- Question No. 55

Simplify the following expression.

$$(3x+5)^2 + (3x-5)^2$$

**Options :**

1.  $500x$
2.  $450x$
3.  $9x^2 + 50$
4.  $2(9x^2+25)$
- 5.

Answer :  $2(9x^2+25)$

- Question No. 56

The volume of a cone with a height equal to the radius and a slant height of 5 cm is:

**Options :**

1.  $125\pi/12\sqrt{3}$  cm<sup>3</sup>

2.  $125\pi/6\sqrt{3} \text{ cm}^3$
3.  $125\pi/12\sqrt{2} \text{ cm}^3$
4.  $125\pi/6\sqrt{2} \text{ cm}^3$
- 5.

Answer :  $125\pi/6\sqrt{2} \text{ cm}^3$

• Question No. 57

A policeman noticed a thief from 300 m. The thief started running and the policeman was chasing him. The thief and the policeman ran at speeds of 8 km/h and 9 km/h, respectively. What was the distance between them after 3 minutes?

Options :

1. 225 m
2. 250 m
3. 300 m
4. 200 m
- 5.

Answer : 250 m

• Question No. 58

If  $\sin \theta + \cos \theta = 4/5$ , then find  $\sin \theta \cdot \cos \theta$ .

Options :

1.  $9/50$
2.  $-9/50$
3.  $9/25$
4.  $-9/25$
- 5.

Answer :  $-9/50$

- Question No. 59

Simplify the given expression.

$$y + 2x - [(y - (y - x + y) - (x + y) + y) - 2y]$$

**Options :**

1.  $-y$
2.  $-2x$
3.  $Y$
4.  $2x$
- 5.

Answer :  $2x$

- Question No. 60

A, B, and C, working alone, can complete a job in 16, 24, and 36 days, respectively. In how many days can they complete the job if they work together?

**Options :**

1.  $7(11/19)$
2.  $5(17/19)$
3.  $4(13/19)$
4.  $6(7/19)$
- 5.

Answer :  $7(11/19)$

- Question No. 61

A person deposited ₹500 for 3 years, ₹650 for 5 years, and ₹1,250 for 7 years. He received a total simple interest of ₹1,620. The rate of interest per annum is:

**Options :**

1. 12%
2. 13%
3. 10.8%
4. 11%
- 5.

Answer : 12%

• Question No. 62

Rakshit, Ajay, and Satish are sanitation workers in a Municipal Corporation. Rakshit alone takes 20 hours to clean a drain while Ajay takes 12 hours when working alone to do the same. All three together take only 5 hours to clean the drain. In how many hours, can Satish complete the work alone?

Options :

1. 12
2. 10
3. 15
4. 18
- 5.

Answer : 15

• Question No. 63

$\square\square\square C \sim \square\square\square DEF$  and the perimeters of  $\square ABC$  and  $\square DEF$  are 40 cm and 12 cm, respectively. If  $DE = 6$  cm, then  $AB$  is:

Options :

1. 12.6 cm
2. 24 cm
3. 20 cm
4. 10 cm
- 5.

Answer : 20 cm



- Question No. 64

On a circular path of 693 m, Sujata and Anjali start walking from the same point but in opposite directions at speeds of 2.85 km/h and 1.5 m/sec, respectively. When they will meet for the first time?

**Options :**

1. After 6.75 minutes.
2. After 6.05 minutes
3. After 5.04 minutes
4. After 4.56 minutes
- 5.

Answer : After 5.04 minutes

- Question No. 65

Select the INCORRECT formula from the following options.

**Options :**

1.  $\sec^2 \theta - \tan^2 \theta = 1$
2.  $\sin^2 \theta + \cos^2 \theta = 1$
3.  $\operatorname{cosec}^2 \theta - \cot^2 \theta = 1$
4.  $\sec^2 \theta + \cos^2 \theta = 1$
- 5.

Answer :  $\sec^2 \theta + \cos^2 \theta = 1$

- Question No. 66

15 men and 25 women can complete a piece of work in 9.6 days. If 16 women can complete the same work in 27 days, find the number of days in which 16 men can complete the same work.

**Options :**

1. 22.50

- 2. 20.25
- 3. 19.20
- 4. 21.60
- 5.

Answer : 20.25

Direction:

Industrial growth of different countries (in crores of ₹):



- Question No. 67

How many countries' industrial growth is more than the average industrial growth?

Options :

- 1. 3
- 2. 4
- 3. 2
- 4. 1
- 5.

Answer : 2

- Question No. 68

If the area of a circle is  $616 \text{ cm}^2$  and a chord  $XY = 10 \text{ cm}$ , then find the perpendicular distance from the center of the circle to the chord  $XY$ .

Options :

1.  $\sqrt{171}$  cm
2.  $\sqrt{161}$  cm
3.  $\sqrt{117}$  cm
4.  $\sqrt{181}$  cm
- 5.

Answer :  $\sqrt{171}$  cm

- Question No. 69

Find the value of  $\sin^2 25^\circ + \sin^2 65^\circ$ .

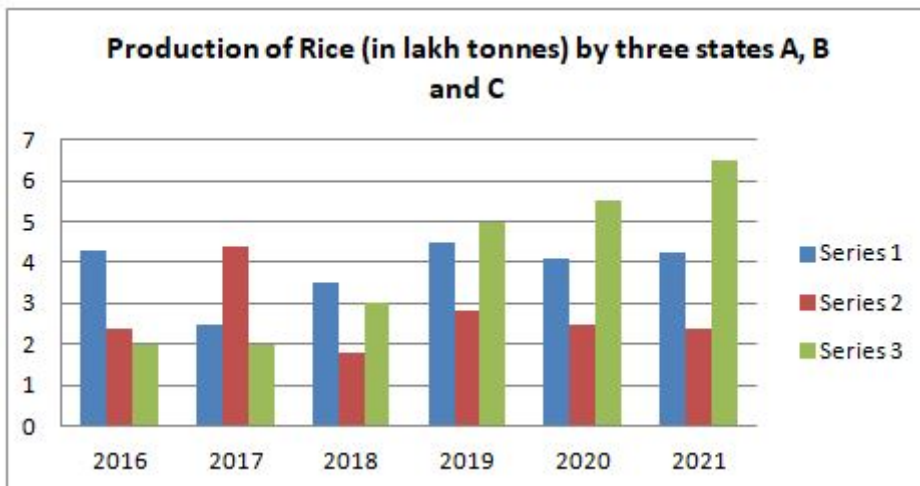
Options :

1. -1
2.  $1/2$
3. 0
4. 1
- 5.

Answer : 1

Direction:

Select the correct statement with respect to the below bar graph.



- Question No. 70

**Options :**

1. Rice production by A in 2016 is less than the rice production by C in 2020.
2. B produced more rice than A and C in 2018.
3. The highest production of rice was in the year 2017.
4. Rice production by B in 2017 is equal to the rice production by A in 2020.
- 5.

Answer : Rice production by A in 2016 is less than the rice production by C in 2020.

- Question No. 70

If  $x\%$  of 280 = 15% of 240 + 20% of 310, then the value of  $x$  is:

**Options :**

1. 38
2. 35
3. 30
4. 40
- 5.

Answer : 35

- Question No. 72

If  $\left(x^2 + \frac{1}{x^2}\right) = 7$ , and  $0 < x < 1$ , find the value of  $x^2 - \frac{1}{x^2}$ .

**Options :**

1.  $3\sqrt{5}$
2.  $4\sqrt{3}$
3.  $-4\sqrt{3}$
4.  $-3\sqrt{5}$

5.

Answer :  $-3\sqrt{5}$

• Question No. 73

A shopkeeper offers the following discount schemes for buyers in an article:

- i. Two successive discounts of 15% each
- ii. A discount of 25% followed by a discount of 5%
- iii. Two successive discounts of 20% and 10%
- iv. A discount of 30%

Under which scheme will the selling price be maximum?

Options :

1. Scheme iv
2. Scheme iii
3. Scheme ii
4. Scheme i
- 5.

Answer : Scheme i

• Question No. 74

The area of two triangles is in the ratio 5: 3 and their heights are in the ratio 5: 7. Find the ratio of their bases.

Options :

1. 3 : 5
2. 7 : 3
3. 7 : 5
4. 2 : 3

5.

Answer : 7 : 3

• Question No. 75

If the LCM and the HCF of two numbers are 12 and 2 respectively, then find the mean proportional of these numbers.

**Options :**

1.  $2\sqrt{6}$

2.  $\sqrt{14}$

3. 2

4.  $\sqrt{6}$

5.

Answer :  $2\sqrt{6}$

• Question No. 76

Select the most appropriate one-word substitution of the given group of words. Irreverent behaviour toward anything held sacred or concerning God.

**Options :**

1. Agnosticism

2. Pantheism

3. Theism

4. Blasphemy

5.

Answer : Blasphemy

• Question No. 77

Sentences of a paragraph are given below in jumbled order. Arrange the sentences in the correct order to form a meaningful and coherent paragraph.

A. Many countries throughout the world have achieved full digitalisation.

B. Initially, the entire world transitioned to digitalisation.

C. This type of internet is known as a metaverse.

D. This existing kind of internet technology, which gives us access to various aspects, is about to change into a better and newer version.

E. The Metaverse is an intriguing technology that has been described as the 'newer version of the internet'.

**Options :**

1. BCEDA
2. DCEBA
3. ABCDE
4. EADCB
- 5.

Answer : DCEBA

- Question No. 78

Select the option that can be used as a one-word substitute for the given group of words.

Huge fire for celebration

**Options :**

1. Firepower
2. Festivity
3. Firefight
4. Bonfire
- 5.

Answer : Bonfire

• Question No. 79

Select the most appropriate option that can substitute the bold segment in the given sentence. If there is no need to substitute it, select 'No substitution required'.

It is reported that **she has win** a prize money of ten lakhs at a reality show.

**Options :**

1. she will won
2. she had win
3. No substitution required
4. she has won
- 5.

Answer : she has won

• Question No. 80

Select the option that expresses the given sentence in passive voice.

Joseph opened the Bible.

**Options :**

1. The Bible is being opened by Joseph.
2. Joseph is opening the Bible.
3. The Bible was opened by Joseph.
4. Joseph opens the Bible.
- 5.

Answer : The Bible was opened by Joseph.

• Question No. 81

The following sentence has been divided into parts. One of them may contain an error. Select the part that contains the error from the given options. If you don't find any error, mark 'No error' as your answer.



He promised them / that he would sure repay/the loan urgently.

**Options :**

1. No error
2. He promised them
3. the loan urgently
4. that he would sure repay
- 5.

Answer : that he would sure repay

- Question No. 82

Select the most appropriate ANTONYM of the given word.

Gullible

**Options :**

1. Credulous
2. Pliant
3. Cynical
4. Simple
- 5.

Answer : Cynical

- Question No. 83

Select the option that expresses the given sentence in active voice.

The ball of yarn was being nudged by the kitten.

**Options :**

1. The kitten was nudged by the ball of yam.
2. The kitten is nudging the ball of yarn.

3. The kitten was nudging the ball of yarn.
4. The kitten has been nudging the ball of yarn.
- 5.

Answer : The kitten was nudging the ball of yarn.

• Question No. 84

Select the most appropriate homonym of the bold word to fill in the blank.

He was **complimented** for his appearance. His shirt \_\_\_\_\_ his trousers perfectly.

**Options :**

1. competed
2. complement
3. commented
4. complemented
- 5.

Answer : complemented

• Question No. 85

Select the correctly spelt option that can substitute the bold word in the given sentence.

**Patrol** is very costly these days.

**Options :**

1. Petrole
2. Petrul
3. Patrole
4. Petrol
- 5.

Answer : Petrol

- Question No. 86

Select the correctly spelt option that can substitute the bold word in the given sentence.

The goods were taken on a public **career**.

**Options :**

1. carier
2. carryer
3. carrier
4. courier
- 5.

Answer : carrier

- Question No. 87

Select the most appropriate ANTONYM of the bold word.

Is there any portal to **redeem** these coupons that I have collected from the store?

**Options :**

1. forsake
2. deplore
3. forfeit
4. embezzle
- 5.

Answer : forfeit

- Question No. 88

Select the most appropriate meaning of the bold idiom/phrase in the given sentence.

Today, the country's nationalists **rule the roost** and hand out the jobs.

**Options :**

1. To be in charge
2. To be prejudiced
3. To save a criminal
4. To exploit someone.
- 5.

Answer : To be in charge

• Question No. 89

Select the most appropriate meaning of the given idiom.

Keep someone at arm's length

**Options :**

1. Avoid becoming friendly with someone
2. Avoid playing with someone
3. Being someone's enemy
4. Avoid becoming bitter with someone
- 5.

Answer : Avoid becoming friendly with someone

• Question No. 90

Select the most appropriate synonym of the bracketed word given in the sentence.

The efforts will be\_\_\_\_\_ (vain) if we do not submit the project report on time.

**Options :**

1. useless
2. careless
3. delightful

4. sensible

5.

Answer : useless

• Question No. 91

Select the most appropriate option to fill in the blank.

The patient looked \_\_\_\_\_ and tired.

**Options :**

1. pail

2. pale

3. pall

4. peel

5.

Answer : pale

• Question No. 92

Select the most appropriate option that can substitute the bold segment in the given sentence.

Natwar was a fraudster who always tried to **fooling** others.

**Options :**

1. betraying

2. deceive

3. cheating

4. revealing

5.

Answer : deceive

- Question No. 93

Select the most appropriate synonym of the given word.

Consent

**Options :**

1. Avert
2. Assent
3. Disturb
4. Dissent
- 5.

Answer : Assent

- Question No. 94

Select the option that can be used as a one-word substitute for the given group of words.

A place to play games and bet on them

**Options :**

1. Motel
2. Hotel
3. Casino
4. Pub
- 5.

Answer : Casino

- Question No. 95

The following sentence has been divided into parts. One of them may contain an error. Select the part that contains the error from the given options. If you don't find any error, mark 'No error' as your answer.

Karan call the restaurant / to ask if he could / reserve a table for tomorrow.

**Options :**

1. Karan call the restaurant
2. reserve a table for tomorrow
3. to ask if he could
4. No error
- 5.

Answer : Karan call the restaurant

Direction:

**In the following passage, some words have been deleted. Read the passage carefully and select the most appropriate option to fill in each blank.**

We must understand that people can process very little information presented orally. So, it is (96) \_\_\_\_\_, particularly for a teacher, to realise that the students have sometimes listened to three or four teachers (97) \_\_\_\_\_ you. So, the teacher must have props like notes, handouts and slides that will make the learning material (98) \_\_\_\_\_ alive for the students and stay that way with them. A visual aid, a little movement or colour will get the students' attention. Another important thing to (99) \_\_\_\_\_ is that long, complicated sentences spoken fast are simply too difficult for students to understand. It is, therefore, (100) \_\_\_\_\_ to use short sentences that make sense to them instantly.

- Question No. 96

Select the most appropriate option to fill in blank no. 96.

**Options :**

1. urgent
2. immaterial
3. unnecessary
4. important
- 5.

Answer : important

Direction:

**In the following passage, some words have been deleted. Read the passage carefully and select the most appropriate option to fill in each blank.**

We must understand that people can process very little information presented orally. So, it is (96) \_\_\_\_\_, particularly for a teacher, to realise that the students have sometimes listened to three or four teachers (97) \_\_\_\_\_ you. So, the teacher must have props like notes, handouts and slides that will make the learning material (98) \_\_\_\_\_ alive for the students and stay that way with them. A visual aid, a little movement or colour will get the students' attention. Another important thing to (99) \_\_\_\_\_ is that long, complicated sentences spoken fast are simply too difficult for students to understand. It is, therefore, (100) \_\_\_\_\_ to use short sentences that make sense to them instantly.

- Question No. 97

Select the most appropriate option to fill in blank no. 97.

Options :

1. behind
2. beside
3. before
4. after
- 5.

Answer : before

Direction:

**In the following passage, some words have been deleted. Read the passage carefully and select the most appropriate option to fill in each blank.**

We must understand that people can process very little information presented orally. So, it is (96) \_\_\_\_\_, particularly for a teacher, to realise that the students have sometimes listened to three or four teachers (97) \_\_\_\_\_ you. So, the teacher must have props like notes, handouts and slides that will make the learning material (98) \_\_\_\_\_ alive for the students and stay that way with them. A visual aid, a little movement or colour will get the students' attention. Another important thing to (99) \_\_\_\_\_ is that long, complicated sentences spoken fast are simply too difficult for students to understand. It is, therefore, (100) \_\_\_\_\_ to use short sentences that make sense to them instantly.



- Question No. 98

Select the most appropriate option to fill in blank no. 98.

**Options :**

1. stay
2. depart
3. go
4. come
- 5.

Answer : come

Direction:

**In the following passage, some words have been deleted. Read the passage carefully and select the most appropriate option to fill in each blank.**

We must understand that people can process very little information presented orally. So, it is (96) \_\_\_\_\_, particularly for a teacher, to realise that the students have sometimes listened to three or four teachers (97) \_\_\_\_\_ you. So, the teacher must have props like notes, handouts and slides that will make the learning material (98) \_\_\_\_\_ alive for the students and stay that way with them. A visual aid, a little movement or colour will get the students' attention. Another important thing to (99) \_\_\_\_\_ is that long, complicated sentences spoken fast are simply too difficult for students to understand. It is, therefore, (100) \_\_\_\_\_ to use short sentences that make sense to them instantly.

- Question No. 99

Select the most appropriate option to fill in blank no. 99.

**Options :**

1. guess
2. detect
3. realise
4. decide
- 5.

Answer : realise

Direction:

**In the following passage, some words have been deleted. Read the passage carefully and select the most appropriate option to fill in each blank.**

We must understand that people can process very little information presented orally. So, it is (96) \_\_\_\_\_, particularly for a teacher, to realise that the students have sometimes listened to three or four teachers (97) \_\_\_\_\_ you. So, the teacher must have props like notes, handouts and slides that will make the learning material (98) \_\_\_\_\_ alive for the students and stay that way with them. A visual aid, a little movement or colour will get the students' attention. Another important thing to (99) \_\_\_\_\_ is that long, complicated sentences spoken fast are simply too difficult for students to understand. It is, therefore, (100) \_\_\_\_\_ to use short sentences that make sense to them instantly.

- Question No. 100

Select the most appropriate option to fill in blank no. 100.

**Options :**

1. compulsory
2. advisable
3. mandatory
4. prohibited
- 5.

Answer : advisable

[Attempt Mock Test Now](#)

All ixamBee Mock Test are FREE @ [www.ixamBee.com](http://www.ixamBee.com)